

## N-(4-Hydroxyphenyl)benzenesulfonamide

Islam Ullah Khan,<sup>a</sup> Irfana Mariam,<sup>a</sup> Muhammad Zia-ur-Rehman,<sup>b\*</sup> Muhammad Arif Sajjad<sup>a</sup> and Shahzad Sharif<sup>a</sup>

<sup>a</sup>Materials Chemistry Laboratory, Department of Chemistry, Government College University, Lahore 54000, Pakistan, and <sup>b</sup>Applied Chemistry Research Centre, PCSIR Laboratories Complex, Lahore 54600, Pakistan

Correspondence e-mail: rehman\_pcsir@hotmail.com

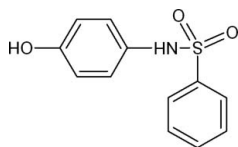
Received 31 March 2010; accepted 9 April 2010

Key indicators: single-crystal X-ray study;  $T = 296$  K; mean  $\sigma(\text{C}-\text{C}) = 0.005$  Å;  $R$  factor = 0.048;  $wR$  factor = 0.146; data-to-parameter ratio = 18.1.

The title compound,  $\text{C}_{12}\text{H}_{11}\text{NO}_3\text{S}$ , synthesized by the reaction of benzene sulfonyl chloride with *para*-aminophenol, is of interest as a precursor to biologically active sulfur-containing heterocyclic compounds. The structure is stabilized by  $\text{N}-\text{H}\cdots\text{O}$  and  $\text{O}-\text{H}\cdots\text{O}$  hydrogen bonds.

### Related literature

For the synthesis of related molecules, see: Zia-ur-Rehman *et al.* (2006, 2009). For a related structure, see: Khan *et al.* (2009).



### Experimental

#### Crystal data

$\text{C}_{12}\text{H}_{11}\text{NO}_3\text{S}$	$V = 1155.88$ (8) Å <sup>3</sup>
$M_r = 249.28$	$Z = 4$
Orthorhombic, $P2_12_1$	Mo $K\alpha$ radiation
$a = 5.1072$ (2) Å	$\mu = 0.28$ mm <sup>-1</sup>
$b = 9.3948$ (4) Å	$T = 296$ K
$c = 24.0903$ (10) Å	$0.12 \times 0.12 \times 0.10$ mm

#### Data collection

Bruker APEXII CCD area-detector diffractometer	2808 independent reflections
6402 measured reflections	2076 reflections with $I > 2\sigma(I)$
	$R_{\text{int}} = 0.032$

#### Refinement

$R[F^2 > 2\sigma(F^2)] = 0.048$	$\Delta\rho_{\text{max}} = 0.26$ e Å <sup>-3</sup>
$wR(F^2) = 0.146$	$\Delta\rho_{\text{min}} = -0.26$ e Å <sup>-3</sup>
$S = 1.02$	Absolute structure: Flack (1983), with 1118 Friedel pairs
2808 reflections	Flack parameter: 0.08 (13)
155 parameters	
H-atom parameters constrained	

**Table 1**

Hydrogen-bond geometry (Å, °).

$D-\text{H}\cdots A$	$D-\text{H}$	$\text{H}\cdots A$	$D\cdots A$	$D-\text{H}\cdots A$
$\text{N1}-\text{H1N}\cdots\text{O2}^{\text{i}}$	0.96	2.07	3.030 (3)	173
$\text{O3}-\text{H3}\cdots\text{O1}^{\text{ii}}$	0.82	2.05	2.857 (4)	166

Symmetry codes: (i)  $x - 1, y, z$ ; (ii)  $x, y - 1, z$ .

Data collection: *APEX2* (Bruker, 2007); cell refinement: *SAINT* (Bruker, 2007); data reduction: *SAINT*; program(s) used to solve structure: *SHELXS97* (Sheldrick, 2008); program(s) used to refine structure: *SHELXL97* (Sheldrick, 2008); molecular graphics: *PLATON* (Spek, 2009) and *Mercury* (Macrae *et al.*, 2006); software used to prepare material for publication: *PLATON*.

The authors are grateful to the Higher Education Commission of Pakistan for financial support to purchase the diffractometer.

Supplementary data and figures for this paper are available from the IUCr electronic archives (Reference: BT5239).

### References

- Bruker (2007). *APEX2* and *SAINT*. Bruker AXS Inc., Madison, Wisconsin, USA.
- Flack, H. D. (1983). *Acta Cryst.* **A39**, 876–881.
- Khan, I. U., Haider, Z., Zia-ur-Rehman, M., Arshad, M. N. & Shafiq, M. (2009). *Acta Cryst.* **E65**, o2867.
- Macrae, C. F., Edgington, P. R., McCabe, P., Pidcock, E., Shields, G. P., Taylor, R., Towler, M. & van de Streek, J. (2006). *J. Appl. Cryst.* **39**, 453–457.
- Sheldrick, G. M. (2008). *Acta Cryst.* **A64**, 112–122.
- Spek, A. L. (2009). *Acta Cryst.* **D65**, 148–155.
- Zia-ur-Rehman, M. Z., Choudary, J. A., Ahmad, S. & Siddiqui, H. L. (2006). *Chem. Pharm. Bull.* **54**, 1175–1178.
- Zia-ur-Rehman, M., Choudary, J. A., Elsegood, M. R. J., Siddiqui, H. L. & Khan, K. M. (2009). *Eur. J. Med. Chem.* **44**, 1311–1316.

**supplementary materials**

*Acta Cryst.* (2010). E66, o1088 [ doi:10.1107/S160053681001322X ]

## *N*-(4-Hydroxyphenyl)benzenesulfonamide

I. U. Khan, I. Mariam, M. Zia-ur-Rehman, M. Arif Sajjad and S. Sharif

### Comment

In the present paper, the structure of *N*-(4-hydroxyphenyl) benzene sulfonamide (Fig. 1) has been determined as part of a research program involving the synthesis and biological evaluation of sulfur containing heterocyclic compounds (Zia-ur-Rehman *et al.*, 2006, 2009; Khan *et al.*, 2009). Bond lengths and bond angles are almost similar to those in the related molecules (Khan *et al.*, 2009). The molecules are linked through intermolecular N—H···O and O—H···O hydrogen bonds (Fig. 2; Table 1).

### Experimental

A mixture of benzene sulfonyl chloride (10.0 mmoles; 1.766 g), para-aminophenol (10.0 mmoles; 1.286 g), aqueous sodium carbonate (10%; 10.0 ml) and water (25 ml) was stirred for half an hour at room temperature followed by evaporation of the solvent. The crude mixture was washed with water and dried. Product obtained was dissolved in methanol and crystallized by slow evaporation of the solvent. Yield 73%.

### Refinement

All H atoms were identified in the difference map. Nevertheless, they were fixed in ideal positions and treated as riding on their parent atoms. The following distances were used: C<sub>methyl</sub>—H 0.98 Å, C<sub>aromatic</sub>—H 0.95 Å, O—H 0.84 Å. U(H) was set to 1.2U<sub>eq</sub> of the parent atoms or 1.5U<sub>eq</sub> for methyl groups.

### Figures

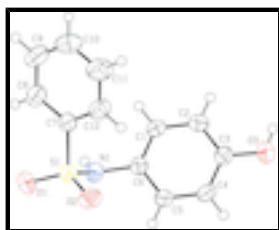


Fig. 1. The molecular structure of the title compound with displacement ellipsoids at the 50% probability level.

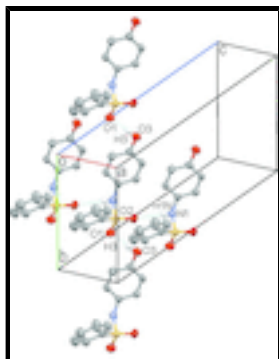


Fig. 2. Perspective view of the three-dimensional crystal packing showing hydrogen-bonded interactions (dashed lines). H atoms not involved in hydrogen bonding have been omitted for clarity.

## *N*-(4-Hydroxyphenyl)benzenesulfonamide

### Crystal data

$C_{12}H_{11}NO_3S$

$M_r = 249.28$

Orthorhombic,  $P2_12_12_1$

Hall symbol: P 2ac 2ab

$a = 5.1072 (2) \text{ \AA}$

$b = 9.3948 (4) \text{ \AA}$

$c = 24.0903 (10) \text{ \AA}$

$V = 1155.88 (8) \text{ \AA}^3$

$Z = 4$

$F(000) = 520$

$D_x = 1.432 \text{ Mg m}^{-3}$

Mo  $K\alpha$  radiation,  $\lambda = 0.71073 \text{ \AA}$

Cell parameters from 6462 reflections

$\theta = 2.5\text{--}27.1^\circ$

$\mu = 0.28 \text{ mm}^{-1}$

$T = 296 \text{ K}$

Needle, colourless

$0.12 \times 0.12 \times 0.10 \text{ mm}$

### Data collection

Bruker APEXII CCD area-detector diffractometer

Radiation source: fine-focus sealed tube

graphite

$\varphi$  and  $\omega$  scans

6402 measured reflections

2808 independent reflections

2076 reflections with  $I > 2\sigma(I)$

$R_{\text{int}} = 0.032$

$\theta_{\text{max}} = 28.3^\circ$ ,  $\theta_{\text{min}} = 1.7^\circ$

$h = -4 \rightarrow 6$

$k = -8 \rightarrow 12$

$l = -32 \rightarrow 32$

### Refinement

Refinement on  $F^2$

Least-squares matrix: full

$R[F^2 > 2\sigma(F^2)] = 0.048$

$wR(F^2) = 0.146$

$S = 1.02$

2808 reflections

155 parameters

Secondary atom site location: difference Fourier map

Hydrogen site location: inferred from neighbouring sites

H-atom parameters constrained

$w = 1/[\sigma^2(F_o^2) + (0.0829P)^2]$

where  $P = (F_o^2 + 2F_c^2)/3$

$(\Delta/\sigma)_{\text{max}} < 0.001$

$\Delta\rho_{\text{max}} = 0.26 \text{ e \AA}^{-3}$

$\Delta\rho_{\text{min}} = -0.26 \text{ e \AA}^{-3}$

0 restraints

Absolute structure: Flack (1983), 1118 Friedel pairs

Primary atom site location: structure-invariant direct methods

Flack parameter: 0.08 (13)

*Special details*

**Geometry.** All esds (except the esd in the dihedral angle between two l.s. planes) are estimated using the full covariance matrix. The cell esds are taken into account individually in the estimation of esds in distances, angles and torsion angles; correlations between esds in cell parameters are only used when they are defined by crystal symmetry. An approximate (isotropic) treatment of cell esds is used for estimating esds involving l.s. planes.

**Refinement.** Refinement of  $F^2$  against ALL reflections. The weighted  $R$ -factor  $wR$  and goodness of fit  $S$  are based on  $F^2$ , conventional  $R$ -factors  $R$  are based on  $F$ , with  $F$  set to zero for negative  $F^2$ . The threshold expression of  $F^2 > \sigma(F^2)$  is used only for calculating  $R$ -factors(gt) etc. and is not relevant to the choice of reflections for refinement.  $R$ -factors based on  $F^2$  are statistically about twice as large as those based on  $F$ , and  $R$ -factors based on ALL data will be even larger.

*Fractional atomic coordinates and isotropic or equivalent isotropic displacement parameters ( $\text{\AA}^2$ )*

	<i>x</i>	<i>y</i>	<i>z</i>	$U_{\text{iso}}^*/U_{\text{eq}}$
S1	0.63260 (16)	0.61227 (9)	0.12889 (3)	0.0363 (2)
O1	0.5233 (5)	0.7519 (3)	0.13349 (12)	0.0522 (7)
N1	0.4626 (5)	0.5129 (3)	0.17054 (11)	0.0370 (7)
C1	0.4079 (7)	0.2576 (4)	0.15217 (13)	0.0395 (8)
H1	0.2692	0.2783	0.1285	0.047*
O2	0.9034 (4)	0.5892 (3)	0.14085 (9)	0.0485 (6)
C2	0.4814 (6)	0.1180 (4)	0.16065 (13)	0.0431 (8)
H2	0.3893	0.0445	0.1437	0.052*
O3	0.7825 (6)	-0.0468 (3)	0.20338 (12)	0.0585 (8)
H3	0.6871	-0.1039	0.1874	0.088*
C3	0.6923 (7)	0.0881 (4)	0.19449 (13)	0.0396 (8)
C4	0.8231 (7)	0.1962 (4)	0.22069 (14)	0.0433 (9)
H4	0.9647	0.1759	0.2437	0.052*
C5	0.7442 (7)	0.3353 (4)	0.21288 (14)	0.0402 (8)
H5	0.8313	0.4087	0.2311	0.048*
C6	0.5380 (6)	0.3661 (4)	0.17841 (12)	0.0321 (7)
C7	0.5766 (6)	0.5525 (4)	0.06026 (12)	0.0351 (7)
C8	0.3782 (7)	0.6111 (4)	0.02947 (14)	0.0493 (8)
H8	0.2742	0.6831	0.0442	0.059*
C9	0.3350 (8)	0.5617 (5)	-0.02374 (15)	0.0595 (11)
H9	0.2018	0.6009	-0.0452	0.071*
C10	0.4879 (8)	0.4549 (5)	-0.04506 (15)	0.0598 (11)
H10	0.4584	0.4225	-0.0810	0.072*
C11	0.6818 (8)	0.3963 (5)	-0.01419 (16)	0.0662 (12)
H11	0.7834	0.3233	-0.0289	0.079*
C12	0.7288 (7)	0.4448 (4)	0.03900 (14)	0.0507 (9)
H12	0.8620	0.4049	0.0602	0.061*
H1N	0.2803	0.5303	0.1630	0.061*

## supplementary materials

---

### Atomic displacement parameters ( $\text{\AA}^2$ )

	$U^{11}$	$U^{22}$	$U^{33}$	$U^{12}$	$U^{13}$	$U^{23}$
S1	0.0375 (4)	0.0329 (4)	0.0385 (4)	-0.0016 (4)	-0.0041 (3)	-0.0002 (4)
O1	0.0636 (17)	0.0303 (12)	0.0625 (16)	0.0040 (12)	-0.0060 (14)	-0.0046 (12)
N1	0.0364 (15)	0.0373 (15)	0.0373 (13)	0.0033 (12)	0.0024 (11)	0.0021 (13)
C1	0.0377 (18)	0.0422 (19)	0.0385 (16)	0.0000 (16)	-0.0116 (14)	0.0006 (15)
O2	0.0358 (13)	0.0577 (16)	0.0519 (13)	-0.0093 (12)	-0.0081 (11)	0.0039 (12)
C2	0.0430 (18)	0.0401 (18)	0.0463 (17)	-0.0019 (17)	-0.0108 (14)	-0.0059 (18)
O3	0.072 (2)	0.0341 (14)	0.0689 (18)	0.0048 (14)	-0.0216 (14)	0.0013 (14)
C3	0.048 (2)	0.0371 (19)	0.0340 (16)	0.0018 (16)	-0.0018 (13)	0.0043 (15)
C4	0.046 (2)	0.045 (2)	0.0395 (17)	-0.0033 (17)	-0.0152 (16)	0.0063 (16)
C5	0.0486 (19)	0.0345 (18)	0.0375 (16)	-0.0059 (17)	-0.0104 (15)	0.0008 (15)
C6	0.0352 (15)	0.0326 (17)	0.0284 (13)	0.0008 (14)	0.0042 (12)	0.0024 (13)
C7	0.0345 (17)	0.0343 (17)	0.0364 (15)	-0.0052 (14)	0.0005 (13)	0.0036 (14)
C8	0.0475 (19)	0.050 (2)	0.0504 (19)	0.004 (2)	-0.0062 (17)	0.0066 (18)
C9	0.060 (3)	0.073 (3)	0.046 (2)	0.000 (2)	-0.0144 (19)	0.012 (2)
C10	0.065 (3)	0.078 (3)	0.0364 (18)	-0.003 (2)	0.0001 (18)	-0.009 (2)
C11	0.065 (3)	0.084 (3)	0.050 (2)	0.017 (3)	-0.0014 (18)	-0.017 (2)
C12	0.045 (2)	0.061 (2)	0.0468 (19)	0.012 (2)	-0.0053 (16)	-0.0020 (19)

### Geometric parameters ( $\text{\AA}$ , $^\circ$ )

S1—O2	1.429 (2)	C4—H4	0.9300
S1—O1	1.430 (3)	C5—C6	1.372 (4)
S1—N1	1.622 (3)	C5—H5	0.9300
S1—C7	1.769 (3)	C7—C8	1.371 (5)
N1—C6	1.445 (4)	C7—C12	1.375 (5)
N1—H1N	0.9629	C8—C9	1.381 (5)
C1—C6	1.371 (5)	C8—H8	0.9300
C1—C2	1.380 (5)	C9—C10	1.371 (6)
C1—H1	0.9300	C9—H9	0.9300
C2—C3	1.380 (4)	C10—C11	1.355 (6)
C2—H2	0.9300	C10—H10	0.9300
O3—C3	1.365 (4)	C11—C12	1.381 (5)
O3—H3	0.8200	C11—H11	0.9300
C3—C4	1.370 (5)	C12—H12	0.9300
C4—C5	1.381 (5)		
O2—S1—O1	120.06 (15)	C6—C5—H5	119.8
O2—S1—N1	107.82 (15)	C4—C5—H5	119.8
O1—S1—N1	105.73 (15)	C1—C6—C5	119.7 (3)
O2—S1—C7	107.28 (15)	C1—C6—N1	121.3 (3)
O1—S1—C7	107.48 (16)	C5—C6—N1	119.0 (3)
N1—S1—C7	107.99 (15)	C8—C7—C12	120.8 (3)
C6—N1—S1	119.2 (2)	C8—C7—S1	119.9 (3)
C6—N1—H1N	116.4	C12—C7—S1	119.3 (3)
S1—N1—H1N	107.6	C7—C8—C9	119.0 (4)

C6—C1—C2	120.4 (3)	C7—C8—H8	120.5
C6—C1—H1	119.8	C9—C8—H8	120.5
C2—C1—H1	119.8	C10—C9—C8	120.2 (4)
C1—C2—C3	119.6 (3)	C10—C9—H9	119.9
C1—C2—H2	120.2	C8—C9—H9	119.9
C3—C2—H2	120.2	C11—C10—C9	120.5 (4)
C3—O3—H3	109.5	C11—C10—H10	119.7
O3—C3—C4	116.8 (3)	C9—C10—H10	119.7
O3—C3—C2	123.1 (3)	C10—C11—C12	120.2 (4)
C4—C3—C2	120.1 (3)	C10—C11—H11	119.9
C3—C4—C5	119.8 (3)	C12—C11—H11	119.9
C3—C4—H4	120.1	C7—C12—C11	119.3 (3)
C5—C4—H4	120.1	C7—C12—H12	120.3
C6—C5—C4	120.4 (3)	C11—C12—H12	120.3
O2—S1—N1—C6	-45.9 (3)	O2—S1—C7—C8	-152.9 (3)
O1—S1—N1—C6	-175.5 (2)	O1—S1—C7—C8	-22.5 (3)
C7—S1—N1—C6	69.7 (3)	N1—S1—C7—C8	91.1 (3)
C6—C1—C2—C3	-2.0 (5)	O2—S1—C7—C12	28.9 (3)
C1—C2—C3—O3	-177.7 (3)	O1—S1—C7—C12	159.3 (3)
C1—C2—C3—C4	1.8 (5)	N1—S1—C7—C12	-87.1 (3)
O3—C3—C4—C5	179.1 (3)	C12—C7—C8—C9	-0.9 (6)
C2—C3—C4—C5	-0.4 (5)	S1—C7—C8—C9	-179.1 (3)
C3—C4—C5—C6	-0.9 (5)	C7—C8—C9—C10	0.4 (6)
C2—C1—C6—C5	0.7 (5)	C8—C9—C10—C11	0.3 (6)
C2—C1—C6—N1	-179.4 (3)	C9—C10—C11—C12	-0.6 (7)
C4—C5—C6—C1	0.8 (5)	C8—C7—C12—C11	0.6 (5)
C4—C5—C6—N1	-179.2 (3)	S1—C7—C12—C11	178.8 (3)
S1—N1—C6—C1	-101.5 (3)	C10—C11—C12—C7	0.2 (6)
S1—N1—C6—C5	78.5 (3)		

Hydrogen-bond geometry ( $\text{\AA}$ ,  $^\circ$ )

$D-H\cdots A$	$D-H$	$H\cdots A$	$D\cdots A$	$D-H\cdots A$
N1—H1N $\cdots$ O2 <sup>i</sup>	0.96	2.07	3.030 (3)	173.
O3—H3 $\cdots$ O1 <sup>ii</sup>	0.82	2.05	2.857 (4)	166.

Symmetry codes: (i)  $x-1, y, z$ ; (ii)  $x, y-1, z$ .

Fig. 1

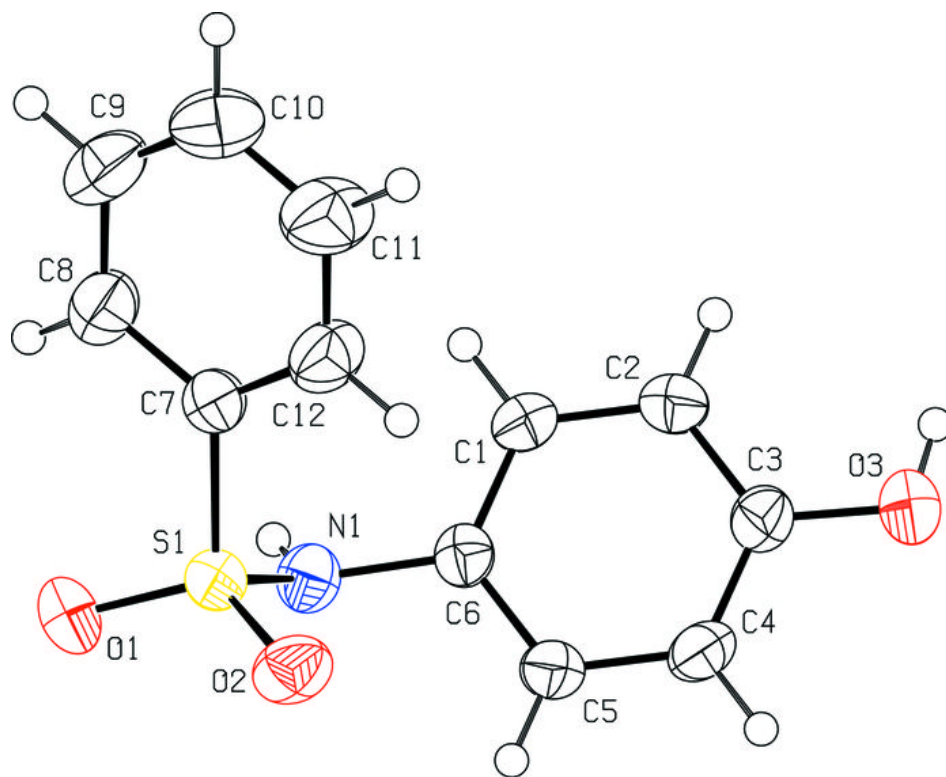




Fig. 2

